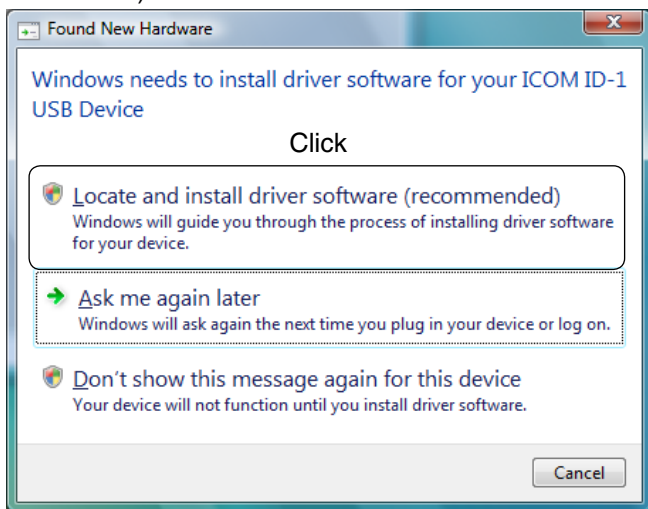


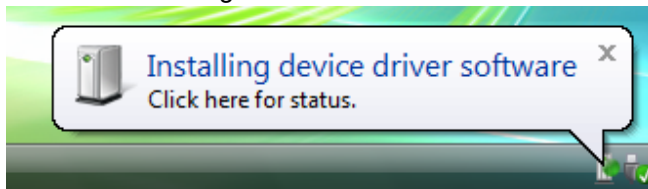
When installing the ID-1 USB driver into Microsoft® Windows Vista™ environment, refer to the following instruction.

■ Installation

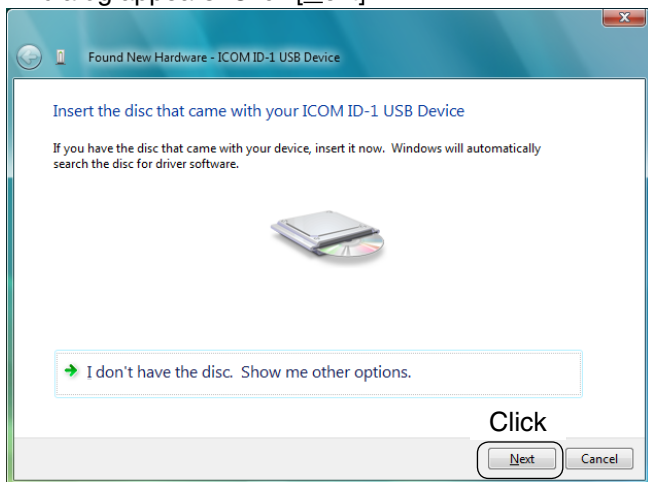
- ① Boot up Windows.
 - Quit all other application if running.
- ② Insert the supplied CD into the appropriate drive.
- ③ Connect the ID-1 and the PC using with an USB cable.
 - "Found New Hardware" dialog appears.
- ④ Click "Locate and install driver software (recommended)."
 - "Found New Hardware" dialog appears.



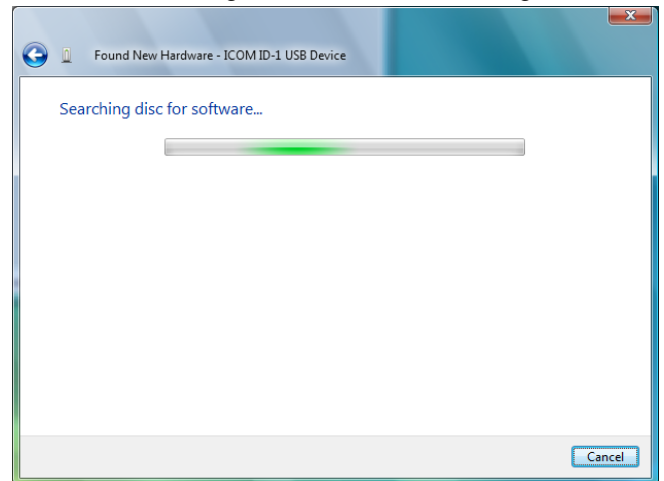
- ⑤ Starts searching for the suitable driver.



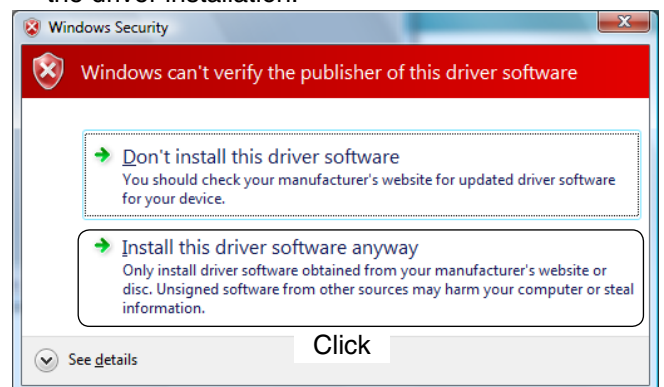
- ⑥ "Found New Hardware - ICOM ID-1 USB Device" dialog appears. Click [Next].



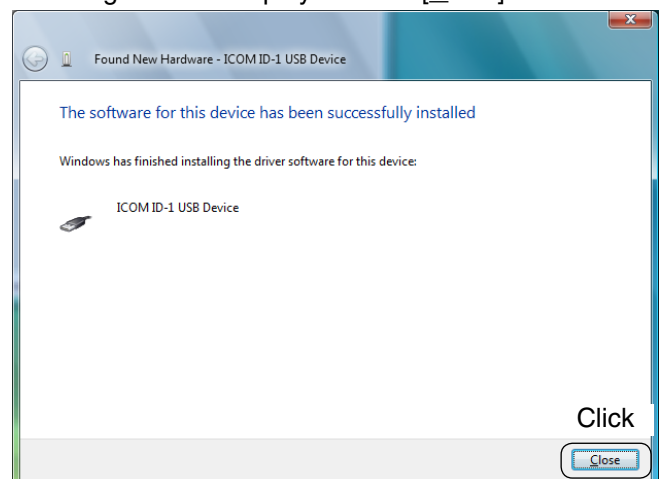
- ⑦ Starts searching for the suitable driver again.



- ⑧ "Windows Security" dialog as below appears when the suitable driver is found.
- ⑨ Click "Install this driver software anyway" to start the driver installation.



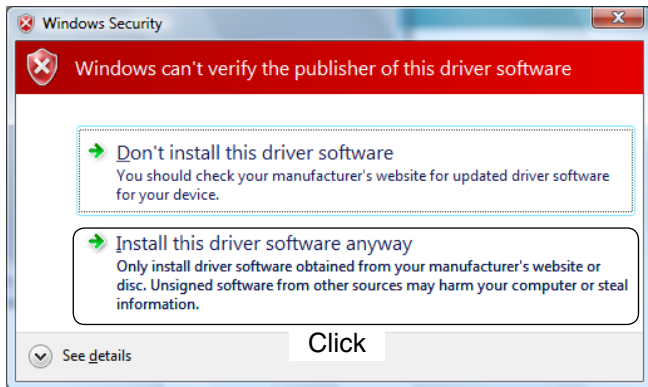
- ⑩ When the USB driver installation is succeeded, the dialog below is displayed. Click [Close].



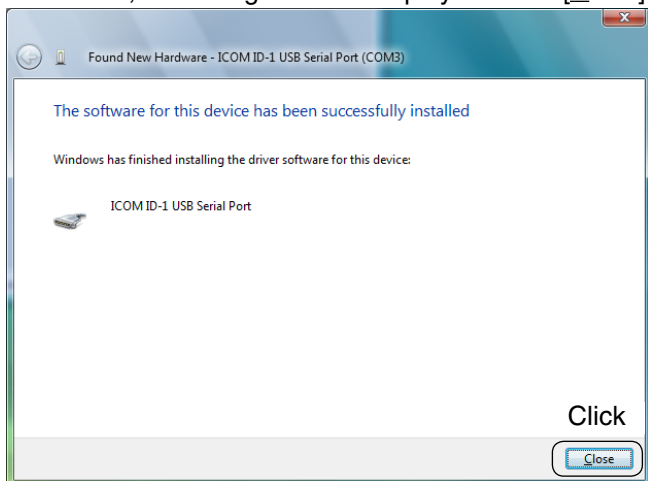
⑪ "Found New Hardware - USB Serial Port" dialog appears automatically. Click [Next].



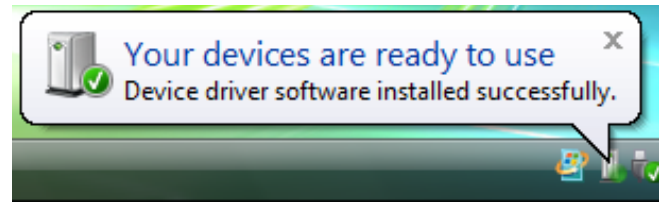
- ⑫ Start searching for the suitable driver.
- ⑬ "Windows Security" dialog as below appears when the suitable driver is found.
- ⑭ Click "Install this driver software anyway" to start driver installation.



⑮ When the USB serial port driver installation is succeeded, the dialog below is displayed. Click [Close].

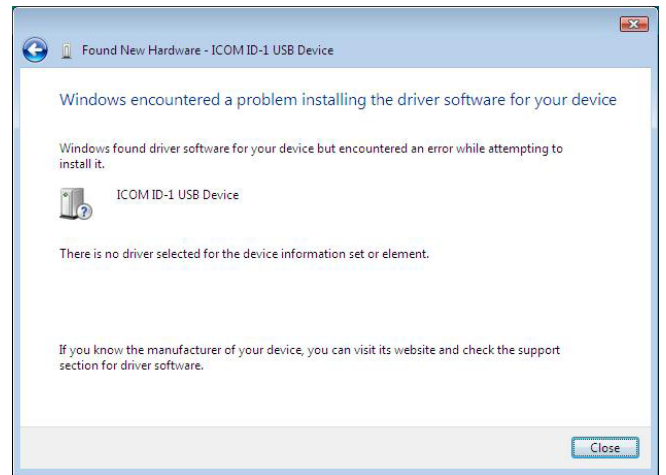


⑯ After the both USB and serial port drivers are installed completely, the dialog below is displayed.
• Eject the CD.



For your information:

The error message dialog as below may be displayed in step ⑩ if Windows Vista™ compatible USB driver for OPC-478U or CS-R20 has been installed with their CD before installing ID-1's driver.



In such case, re-install both the ID-1's USB and serial port driver from 'Device Manager.'